

Booger Hog®

BOHO

Owner's Manual

Booger Hog® Serial Number _____



Before using this Booger Hog®, study and understand entire Owner's Manual.



W A R N I N G S

The **Booger Hog®** is for removing excess mortar from newly constructed masonry walls. Use outside of this scope may cause damage to equipment or result in injury, even death.

Model	Weight
BOHO	24lbs.(10.8 kg)



Make sure anyone operating the **Booger Hog®** is thoroughly familiar with its operation. Keep all unauthorized and untrained personnel, especially children, away from the **Booger Hog®**.

All parts of the **Booger Hog®** should be inspected before use; any worn, damaged, or corroded part should be taken out of service immediately and replaced. Use only factory authorized parts.

Do not alter any part of the **Booger Hog®**.



Always wear approved safety glasses, ear protection, and hard hats when operating or servicing a **Booger Hog®**.



Avoid breathing dust produced while using the **Booger Hog®**.



Avoid contact with hot electric drill motor. Allow system to cool before performing any repair or service.



Never use **Booger Hog®** in rain or wet conditions. Electric shock may occur.



Always use a GFCI (Ground Fault Current Interrupt) power cord code marked "W-A" or "W" with **Booger Hog®**.



Never run **Booger Hog®** in reverse. Damage will occur to Flexible Driveshaft.



Electrical Hazard: Keep **Booger Hog®** away from all electrical power sources, including outlets, receptacles, transformers, and lights.



Consult Milwaukee® owners manual for additional warnings and care of electric drill.



Your **Booger Hog®** has been shipped without the Bi-Pod Mount attached. Before operating **Booger Hog®**, attach Bi-Pod Mount using supplied hardware.

Warning: California - Proposition 65 Warning

Engine exhaust and some of its constituents, and some dust created by power sanding, sawing, grinding, drilling, and other construction activities contains chemicals known to the State of California to cause cancer, birth defects and other reproductive harm. Some examples of these chemicals are:
Lead from lead based paints - Crystalline silica from bricks -Cement and other masonry products -Arsenic and chromium from chemically treated lumber

Your risk from these exposures varies, depending on how often you do this type of work. To reduce your exposure to these chemicals: ALWAYS work in a well ventilated area, and work with approved safety equipment, such as dust masks that are specially designed to filter out microscopic particles.



EZ Grout®
Corporation
 1-800-417-9272
 www.ezgrout.com

EZ Grout Corporation
 405 Watertown Road
 Waterford, Ohio 45786
 (740) 749-3512 or 1-800-417-9272
 Fax (740) 749-0602

Operating Instructions

Note: The Drill and Hand Grip on the Booger Hog® is completely adjustable and may be adjusted for each individual for added comfort.

- 1) Inspect **Booger Hog®** for damaged parts. Replace if necessary with factory authorized parts.
- 2) Grease **Booger Hog®** before use.
- 3) Pull trigger and lock drill in “on” position.
Warning: Drill will not shut-off automatically when dropped or released.
Warning: The drill must be in forward. Damage will occur if reverse is used.
- 4) Grasp Hand Grip in one hand and the Drill mount with the other.
- 5) Place disc of **Booger Hog®** on masonry wall.
- 6) Trace both Head and Bed Joints with **Booger Hog®** to remove excess mortar and concrete from the masonry wall.
- 7) When wall is sufficiently clean, remove the **Booger Hog®** from the wall.
- 8) Pull the trigger to release the trigger lock.

Disc Replacement

Warning: Booger Hog® is designed to be used with a 7” Disc. Use of larger disc may cause damage to Booger Hog®.

- 1) Unplug **Booger Hog®** from power source.
- 2) Using a glove, grasp outside edge of disc with hand.
- 3) Use a 7/8” wrench or adjustable wrench to remove Arbor Clamp Nut.
Warning: If disc is too tight to loosen by hand, use a flat blade screwdriver to hold Arbor.
- 4) Remove worn disc.
- 5) Install new disc.
- 6) Install Arbor Clamp Nut and tighten.

Warning: Keep all clothing, hair, and body parts away from rotating disc.

Recommended Minimum Wire Gauge for Extension Cords*

Nameplate Amperes	Extension Cord Length				
	25 ft.	50 ft.	75 ft.	100 ft.	150 ft.
0-2.0	18	18	18	18	16
2.1-3.4	18	18	18	16	14
3.5-5.0	18	18	16	14	12
5.1-7.0	18	16	14	12	10
7.1-12.0	16	14	12	10	
12.1-16.	14	12	10		
16.1-20.0	12	10			

*Based on limiting the line voltage drop to 5V at 150% of the rated current.

Flexible Driveshaft Replacement

- 1) Unplug **Booger Hog®** from power source.
- 2) Remove Drill Strap from **Booger Hog®**.
- 3) Remove Drill and Driveshaft assembly from **Booger Hog®**.
- 4) Using a chuck key, loosen the Drill Chuck and remove the Driveshaft from the drill.
- 5) Install new Driveshaft into Drill Chuck and tighten.
Note: Place 1” of the square shank of Driveshaft into the Drill Chuck.
- 6) Install Drill and Driveshaft assembly into Shaft Assembly till the Driveshaft touches the Arbor.
- 7) Apply a minimal amount of pressure to the Driveshaft with one hand while rotating the Arbor with the other. When the Driveshaft is aligned with the Arbor, it will spring into place and hold the Arbor from turning.
- 8) Install Drill and Drill Strap.

Arbor/Bearing Assembly Replacement

- 1) Unplug **Booger Hog®** from power source.
- 2) Remove Disc as described in the Disc Replacement section of this manual.
- 3) Remove Disc Guard.
- 4) Align slot in Arbor with holes in Snap Ring. Use straight snap ring pliers to remove Snap Ring.
Note: The Snap Ring can not be removed from the Arbor/Bearing Assembly. A new Snap Ring will be provided with the new part.
- 5) Remove Arbor/Bearing Assembly from the Swivel Head.
- 6) Install new Arbor/Bearing Assembly into Swivel Head.
 Turn the Arbor as it is being inserted into the housing to align the square shank of the Driveshaft with the square hole in the Arbor.
- 7) Install the new Snap Ring into the groove.
- 8) Reinstall the Disc Guard and Disc.

Maintenance

The **Booger Hog®** has two (2) grease fittings. Grease fittings at the following intervals: 1 pump per week on shaft, 1 pump per month on Swivel Head Mount. See drawing for location of fittings.

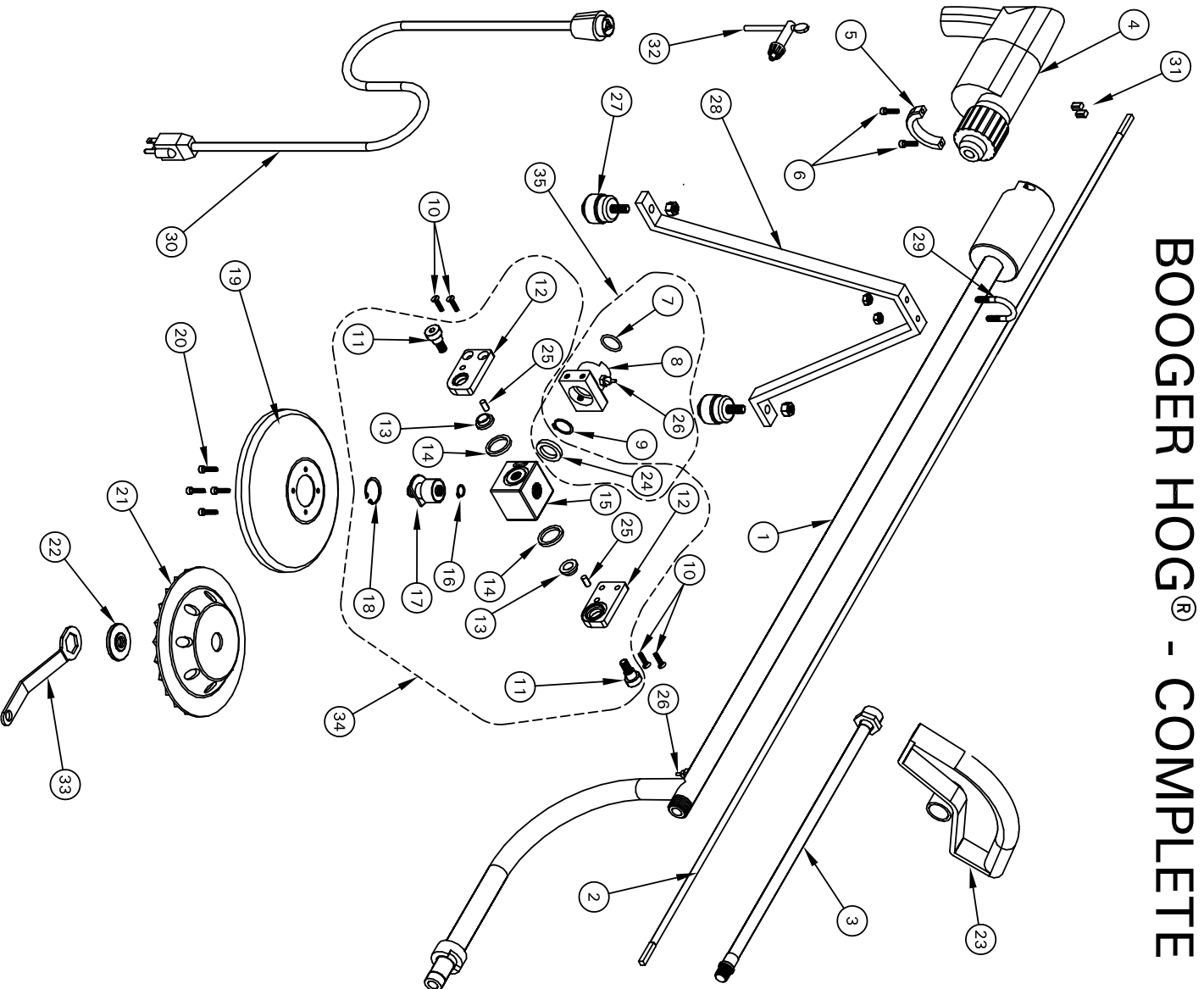
To avoid premature drill failure, keep drill free of dust and debris.

Obtaining Spare Parts

- 1) Record the Serial Number from the Serial Number stamped on the **Booger Hog®**.
- 2) Using the parts reference table in this manual, record Part Number.
- 3) Contact your local **Booger Hog®** dealer or **EZ Grout Corporation** at (800)417-9272 with information from Step 1 and 2.

BOOGER HOG® - COMPLETE

ITEM	PART NUMBER	QTY	DESCRIPTION
1	BOHO-10	1	Shaft Assembly
2	BOHO-11	1	Flexible Driveshaft
3	BOHO-9	1	Flexible Driveshaft Casing
4	11-137	1	O234-06 Milwaukee Drill
5	BOHO-5	1	Drill Strap
6	09-371	2	#10-24 Stainless Steel Socket Head Cap Screw
7	13-122	1	-118 Quad O-Ring
8	BOHO-13	1	Swivel Head Mount
9	09-805	1	7/8" External Snap Ring
10	09-370	4	1/4"-28 Stainless Steel Flat Head Screw
11	09-369	2	1/2" Stainless Steel Shoulder Bolt
12	BOHO-14L	1	Swivel Head Mount - Left Arm
	BOHO-14R	1	Swivel Head Mount - Right Arm
13	15-132	2	Oil-impregnated Flange Bearing
14	13-123	2	-214 Felt O-Ring
15	BOHO-1	1	Swivel Head
16	09-809	1	15/32" External Snap Ring
17	BOHO-3	1	Arbor/Bearing Assembly
18	09-810	1	1 1/4" Internal Snap Ring
19	BOHO-19	1	Disc Guard (Diamond Disc)
	BOHO-16	1	Disc Guard (Carbon Disc)
20	09-372	4	#10-24 Stainless Steel Button Head Screw
21	11-151	1	7" OD Spiral Diamond Disc
	11-127	1	7" OD Carbon Grinding Disc (Optional)
22	11-138	1	Arbor Clamp Nut
23	11-141	1	Hand Grip
24	13-124	1	Dust Seal
25	09-419	2	1/4" Stainless Steel Dowel Pin
26	09-602	2	Grease Fitting (Grease Daily)
27	15-134	2	Ball Rollers
28	BOHO-18	1	Bi-Pod Mount
29	09-376	1	U-Bolt
30	11-153	1	8' Cord Set
31	11-152	2	Carbon Brushes
32	11-132	1	Chuck Key 48-66-3280
33	BOHO-21	1	Disc Wrench
34	BOHO-A-2	1	Swivel Head Repair Kit
35	BOHO-A-4	1	Swivel Head Mount Assembly Kit





All EZ Grout Products are backed by our one-year warranty on parts and are now available for order by calling 1-800-417-9272 or visit us at www.ezgrout.com

EZ Grout Corporation is the exclusive manufacturer of the patented **Grout Hog®** Grout Delivery System the **Mud Hog®** Hydraulic Mixing Station, the **Hog Trough®** mud pan, the **Hog Cart™**, the **Hog Slopper™**, the **Booger Hog®** Wall Scrubber, and the **Hog Leg®** Wall Brace System.

Limited Warranty

The manufacturer warrants that products manufactured shall be free from defects in material and workmanship that develop under normal use for a period of one year on all products from the date of shipment. The foregoing shall be the exclusive remedy of the buyer and the exclusive liability of the manufacturer. Our warranty excludes normal replaceable wear items, i.e. gaskets, wear parts, seals, O-rings, belts, drive chains, clutches, etc. Any equipment, part or product which is furnished by the manufacturer but manufactured by another, bears only the warranty given by such other manufacturer. (Manufacturer agrees to furnish free of charge a written description of problem or cause.) Warranty is voided by product abuse, alterations, use of equipment in applications for which it was not intended, use of non-manufacturer parts, or failure to follow documented service instructions. The foregoing warranty is exclusive of all other warranties whether written or oral, expressed or implied. No warranty of merchantability or fitness for a particular purpose shall apply. The agents, dealers, and employees of Manufacturer are not authorized to make modifications to this warranty, or additional warranties binding on the Manufacturer. Therefore, additional statements, whether oral or written, do not constitute warranty and should not be relied upon.

The Manufacturer's sole responsibility for any breach of the foregoing warranty provisions, with respect to any product or part not conforming to the Warranty or the description herein contained, is at its option (a) to repair, replace, or refund such product or parts upon the prepaid return thereof to location designated specifically by the Manufacturer. Product returns not shipped prepaid will be refused (b) as an alternative to the foregoing modes of settlement- the Manufacturer's dealer may repair defective units with reimbursement for expenses. A written description of problem or cause must accompany all warranty claims.

Except as set forth here in above and without limitation of the above, there are no warranties or other affirmation which extend beyond the description of the products on the fact here of, or as to operational efficiency, product reliability, or maintainability or compatibility with products furnished by others. In no event, whether as a result of breach of contract or warranty or alleged negligence, shall the Manufacturer, be liable for special or consequential damages including but not limited to: Loss of profits or revenue, loss of use of the product or any associated product, cost of capital, cost of substitute products, facilities or services or claims of customers. Manufacturer does not assume responsibility for any accident due to equipment modification.

No claim will be allowed for products lost or damaged in transit. Such claims should be filed with the carrier within fifteen days.

Effective July 20, 2005

