

**PERFORMANCE  
INNOVATION  
SELECTION**



**RELIABILITY  
WARRANTY  
VISIBILITY**

# XR1045

Capacity . . . . . 10,000 lbs  
 Max Lift Height . . . . . 45'  
 Forward Reach . . . . . 30' 4"  
 Frame Leveling L/R . . . . . 11°  
 Weight . . . . . 27,130 lbs  
 Engine . . . . . Perkins 111 hp  
 Fuel Capacity . . . . . 48 gal  
 Tires . . . . . Foam Filled  
    13.00 x 24 E3  
 GPM . . . . . 49  
 PSL . . . . . 3,500  
 Hydraulic Oil Cap . . . . . 58 gal  
 Length to fork face . . . . . 21' 9"  
 Width . . . . . 101"  
 Height . . . . . 8' 1"  
 Wheel Base . . . . . 120"  
 Ground Clearance . . . . . 16.5"  
 Turning Radius . . . . . 12'  
 Warranty . . . . . Xtreme 10-5-2



**10-5-2 WARRANTY**

**10 YEARS OR 10,000 HOURS**  
 FRAME & CHASSIS WELDMENT

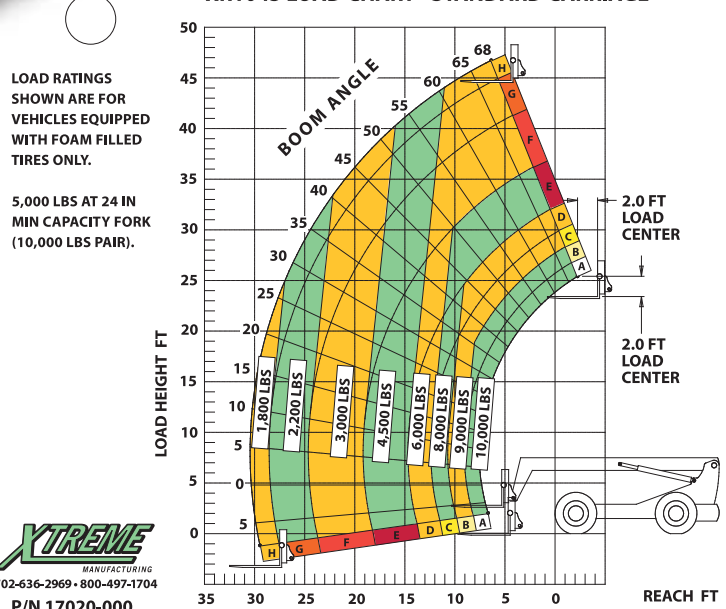
**5 YEARS OR 5,000 HOURS**  
 BOOM WELDMENT & ROLLERS

**2 YEARS OR 2,000 HOURS**  
 ENGINE, ELECTRICAL, TRANSMISSION, DRIVE  
 AXLES & HYDRAULIC COMPONENTS

1415 W. Bonanza Rd. Las Vegas, NV  
 (702) 636-2969 (800) 497-1704

[www.xtremefg.com](http://www.xtremefg.com)

XR1045 LOAD CHART - STANDARD CARRIAGE



**PERFORMANCE  
INNOVATION  
SELECTION**



**RELIABILITY  
WARRANTY  
VISIBILITY**



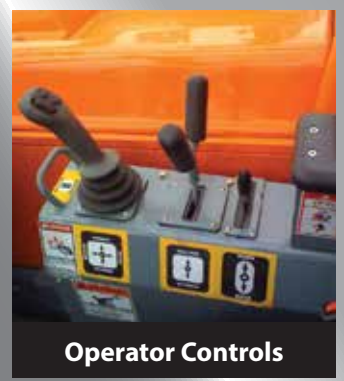
Long-Life Rollers



Boom Lift Point



360° Visibility



Operator Controls

The **XTREME** Difference



- 360° Visibility
- Long Life Boom Rollers
- Suspension Seat
- Easy Service Access
- Protected Tilt & Extend Cylinders
- Steel Hydraulic & Fuel Tanks
- Long Life Lexan Labels
- Fiberglass Hoods
- Heavy Duty Boom Chains
- Suspended Pedals
- Electrical Ring Terminals
- Wider Outrigger Stance
- Large Capacity Fuel Tanks
- Trunnion Mounted Sway Cylinders
- Melonite Pins
- Rear Axle Stabilization (RAS)
- Center Mounted Power Train
- Standard Auxiliary Hydraulics
- Solid Steel Plate Chassis
- Steel Dash
- Ductile Steel Manifold
- Easy Cab Mounted Grab Handles
- Reliable Perkins Engine
- Master Disconnect Switch
- Boom Lift Point
- Axle Mounted Outriggers
- Manual Lowering Valve (Cylinders)
- Large Cross Section Boom
- Easy Tie Downs
- "Y" Frame Sway Handle
- Heavy Duty Pre-Cleaner
- Additional High Pressure Hyd Filter
- Direct Engine/Trans Connection
- Individual Gauges and Switches

Attachments



- Standard Fixed Carriage (48", 60", 72", 96")
- Fork Positioning Carriage (48", 72", 96")
- Swing Carriage
- Tilt Carriage
- Personnel Platform
- Sling Mount
- Bucket (1.0 - 2.0 cu-yd)
- Truss (2 ft, 3 ft, 12 ft, 15 ft)
- Telescopic Truss (Slide on)
- Pole Grapple Carriage
- Grapple Bucket
- Concrete Hopper

Accessories / Options



- Enclosed Cab w/Heat
- Enclosed Cab w/Heat & A/C
- Boom Work Light Package
- Flashing Amber Strobe
- Pintle Hook
- Tail/Turn/Brake Lights
- LED Lighting
- Steel Fenders
- 5th Wheel Attachment
- Boom Maintenance Stand
- Battery Blanket
- Limited Slip Axle(s)
- Locking Fuel Cap
- Soft Cab
- Additional Lift Points
- Swivel Lifting Hook
- Auxiliary Cab Heater
- Dual Batteries
- Clear Glass
- Padded Arm Rest
- Two Wheel Rear Steer